



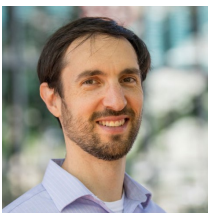
Brown University School of Public Health

# Doctorate in Epidemiology

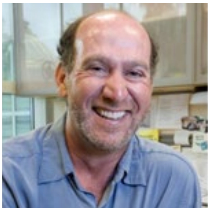
Learn public health by doing public health

Brown's Ph.D. in Epidemiology program prepares students to become leading, independent investigators with rigorous training in epidemiologic methods. Graduates excel in a variety of fields, including academia, industry, government and public health practice. Students have the opportunity to work on applied projects through Rhode Island's Department of Health and nearby Rhode Island hospitals.

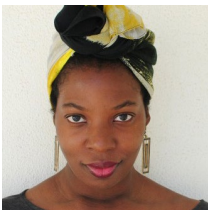
## FEATURED FACULTY IN EPIDEMIOLOGY



**Allan Just** studies environmental exposures, including the relationships between air pollution, climate and health, and was recently recognized with a National Institute of Environmental Health Sciences Outstanding New Environmental Scientist award.



**Mark Lurie**, director of the International Health Institute, is an infectious disease epidemiologist whose latest project focuses on predicting and preventing the next pandemic using geographical footprints and social interaction.



**Erica Walker** founded Brown's School of Public Health Community Noise Lab, which helped the City of Boston and the Red Sox Organization address noise pollution around Fenway Park.

## PROGRAM HIGHLIGHTS

- o Outstanding student-to-faculty ratio (<1:1)
- o Students trained in grant writing, with many obtaining federal funding for their dissertation
- o All Ph.D. students, including international students, are admitted with full aid (tuition, stipend and health insurance)
- o Of the Epidemiology PhD students who completed a 2023 survey, 100% were satisfied with faculty expertise, research opportunities, and dissertation advising.



Learn more about this program:  
[epidemiology.sph.brown.edu/academics/doctorate](https://epidemiology.sph.brown.edu/academics/doctorate)



The Brown University School of Public Health brings together world-class researchers and students to work toward a common goal of improving the lives of people across the globe. Our students are future public health leaders who are being trained to evaluate and intervene upon issues that face our most vulnerable populations. Our researchers are working on the front lines of the most timely public health crises of our time. Together, we are committed to building a more successful academic and research environment for all.

 **BROWN SPH AT A GLANCE**

**11**

graduate degree options including traditional, online and accelerated MPH programs

**4:1**

student-to-faculty ratio or less

**14**

innovative research centers



 **TOP RESEARCH AREAS**

- Addiction, overdose and harm reduction
- Aging and long-term care
- Child and Adolescent health
- Climate change and health
- Data science
- Global health
- Health disparities and health equity
- Health policy
- Infectious disease
- LGBTQ+ health
- Mindfulness
- Nutrition and physical activity



Visit us at [sph.brown.edu](http://sph.brown.edu).

121 South Main Street, Providence, RI 02903  
401-863-3375 | [sph-admissions@brown.edu](mailto:sph-admissions@brown.edu)



Fully accredited by the Council on Education for Public Health (CEPH)